



# Introduction

 Q\_iso Technology Co., Ltd.

# Contents

## Welcome to Q\_iso

1. Company Outline
2. Business Area & Services
3. Engineering Execution
4. Quality Management
5. Q\_iso's Core Assets
6. Management Objectives
7. Customers
8. Experiences

# Welcome to Q\_iso



Q\_iso Technology Co., Ltd. (Q\_iso), a plant engineering specialist, has served plant engineering works based on “Computer Aided 3-Dimensional Centric Design”. since its establishment in 2001.

The current speedy development of information technologies allows us to execute the engineering and design work in-house, as well as at partner’s office and project site in real time through an integrated system, even though the works may be done in many different places. A network set up by the company lets partners share the engineering and design data on line.

Moreover, the useful 3<sup>rd</sup> party program required for plant engineering also are readily available in-house and strengthen its functions through continuous self-development, which have replaced for many activities that have been done manually by engineers before.

To cope flexibly with rapidly changing engineering business all over the world, we shall do our best to fulfill the customer’s requirement of plant engineering industries both at home and abroad together with our management and staffs.

Sincerely yours,

**Jeong, Gyeong Hwa**  
CEO & President

# 1. Company Outline

## 1) General Information

- **Company Name** : **Q\_iso Technology Co., Ltd.(Q\_iso)**
- **Established** : **January 30, 2001**
- **President** : **Jeong, Gyeong-Hwa**
- **Location** : **No. 906, Daerung Post Tower III,  
27, Digital-ro 34-gil, Guro-Gu,  
Seoul, 152-746, Korea**
- **Paid-up Capital** : **₩ 927,000,000.-**
- **Number of Employees** : **95**

## 2) Brief History

~ Present

Have performed more than 150 Projects for Domestic and Overseas Customers for Oil Refinery, Gas Processing, Petrochemical, Power Plant, Biochemical and Other Industrial Projects.

2010~2015

Selected as an Excellent Partnership by Major EPC Contractors of Korea

2006.10

Awarded Export Tower(5 Million US\$) by Government.  
Selected as a Superior Technology Company and Innovative Business Company by Korean Government Agencies.

2003.09

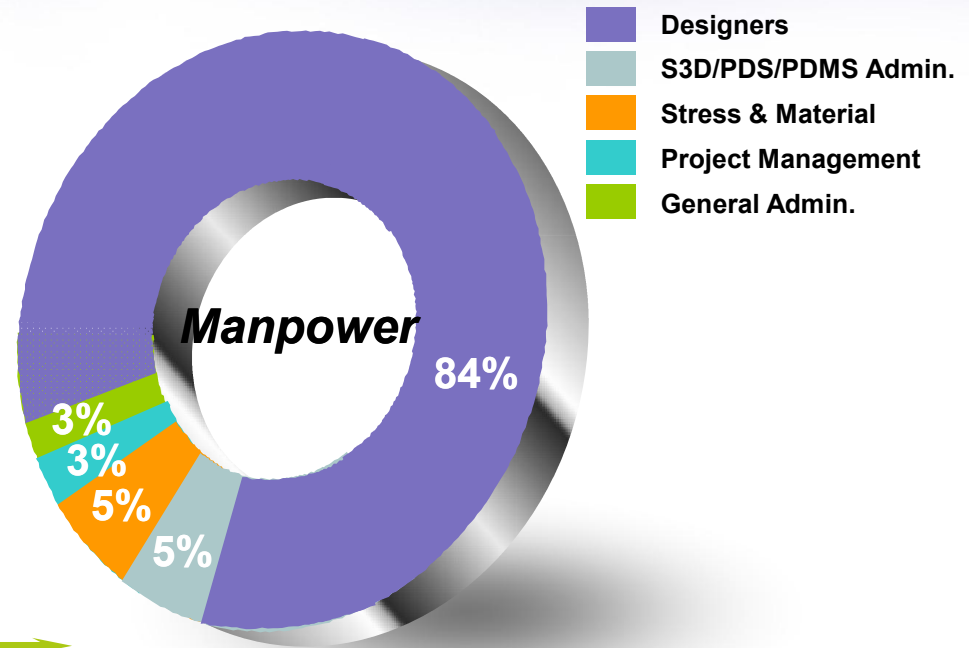
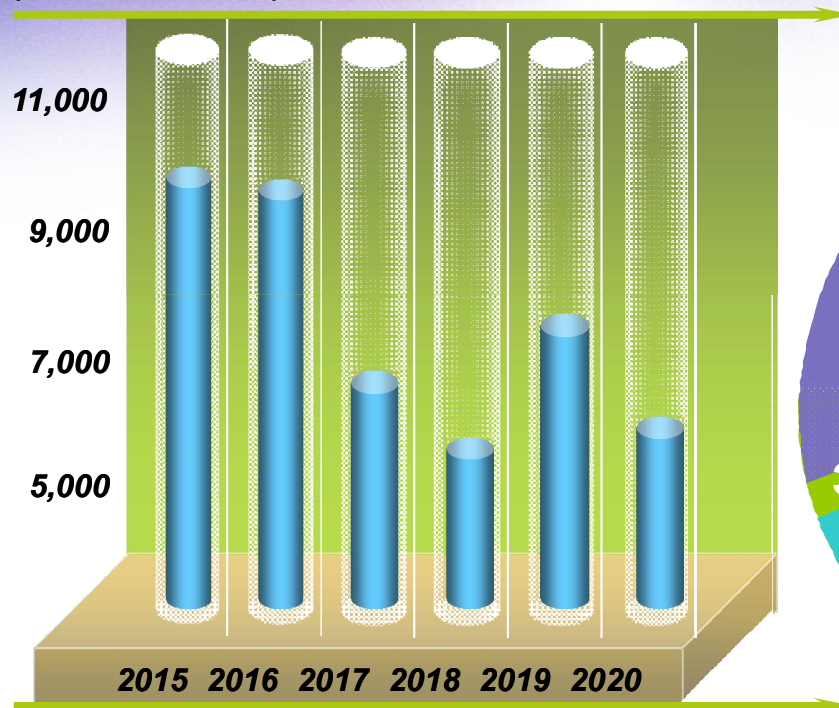
Iso 9001 certified by Worldwide Quality Management (U.K)

2001.01

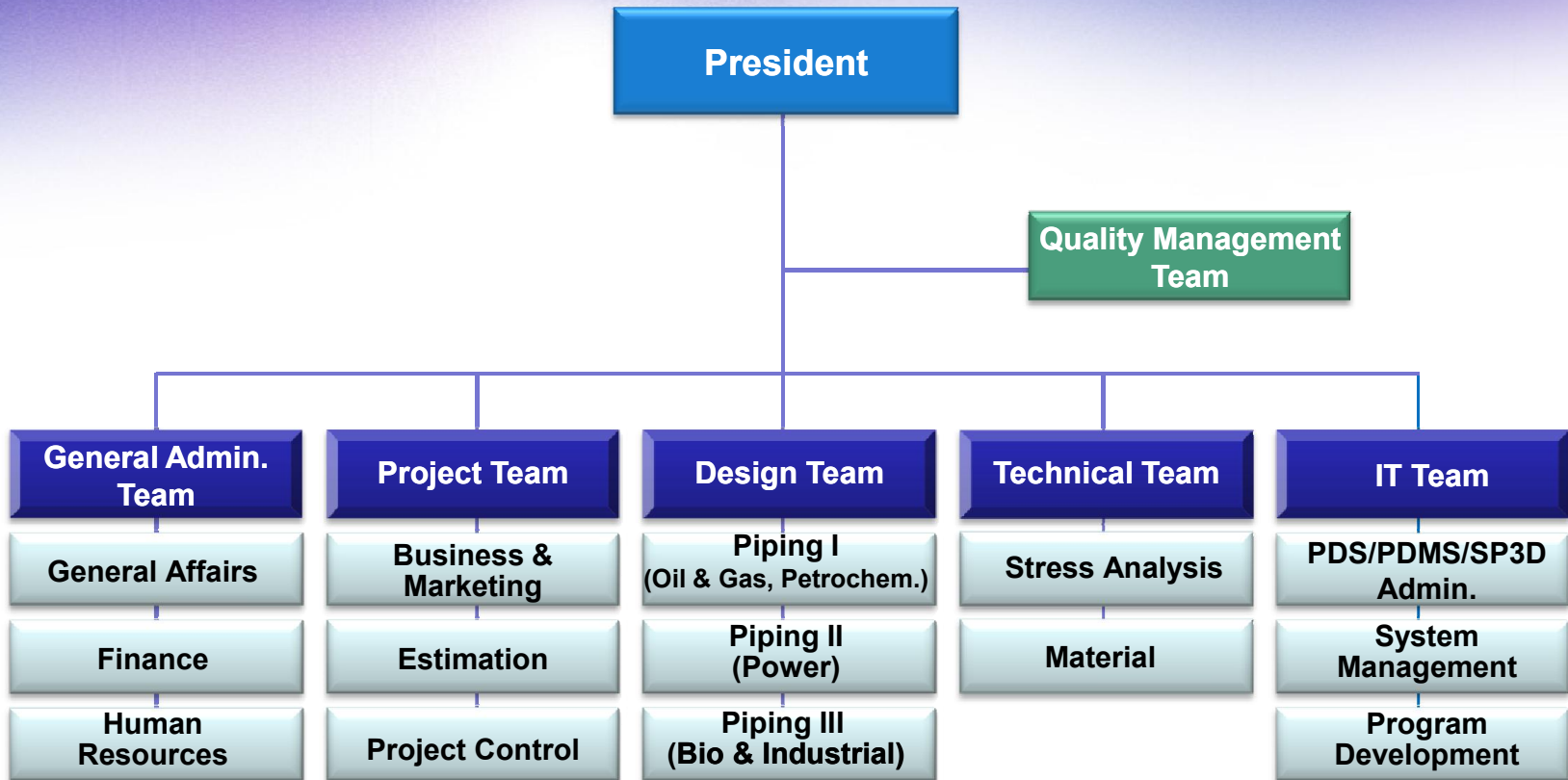
Established as a Specialized Engineering Company in Piping Design & Computer Aided 3-Dimensional Modeling for Oil Refinery, Gas Processing, Petrochemical and Industrial Facilities.

### 3) Annual Revenue & Manpower

(Unit : 1,000 US\$ )



## 4) Organization



## 5) Hardwares & Softwares

	Item	Specification	Q'ty
Hardware	Workstations	HP : Z600, Z620 Dell: T5610	120
	S3D/PDS/PDMS Server	HP DL580 Gen9	10
	FTP Server	HP Z600	1
	A0 Plotter	Design Jet500	1
	Multifunction Printer	Canon	4
Software	PDS		12
	S3D		3
	PDMS		3
	Isogen		1
	Drawiz		10
	E-Draw		2
	Smart Plant Review		2
	Microstation J		20
	Auto CAD		30
	Brics CAD		15
Caeser II		4	
Others	47" Monitor 1 EA. Beam Project 1 EA. Inkjet Printer 7 EA.		



# 2. Business Area & Services

## 1) Business Area

**Power**



**Biochemical & Other Industries**



**Petrochemical**



**Oil & Gas, LNG**



## 2) Services

### **Project Management**

- Overall Project Execution Plan
- Project Schedule
- Engineering Execution Plan & Project Management
- Execution Coordination & Project Reporting
- Quality Management Plan
- Prepare the Progress Report (including the Progress Curve, Summary), etc.

### **Procurement & Inspection Services**

- Qualification of Vendors
- Preparation of the Inquiry Package
- Receipt of Quotation
- Technical Evaluation
- Advisory Consultation of Commercial Negotiation
- Expediting Services
- Inspection Services

### **Basic & Detail Engineering Services**

- Basic Engineering
- Front-End Engineering
- Detail Engineering
- Process Engineering
- Mechanical Engineering
- Piping Engineering
- Instrumentation Engineering
- Civil & Structural Engineering

### **Construction & Start-up Support**

- Pre-Commissioning
- Start-up Operation
- Performance Operation
- Revamp & Modification
- Maintenance

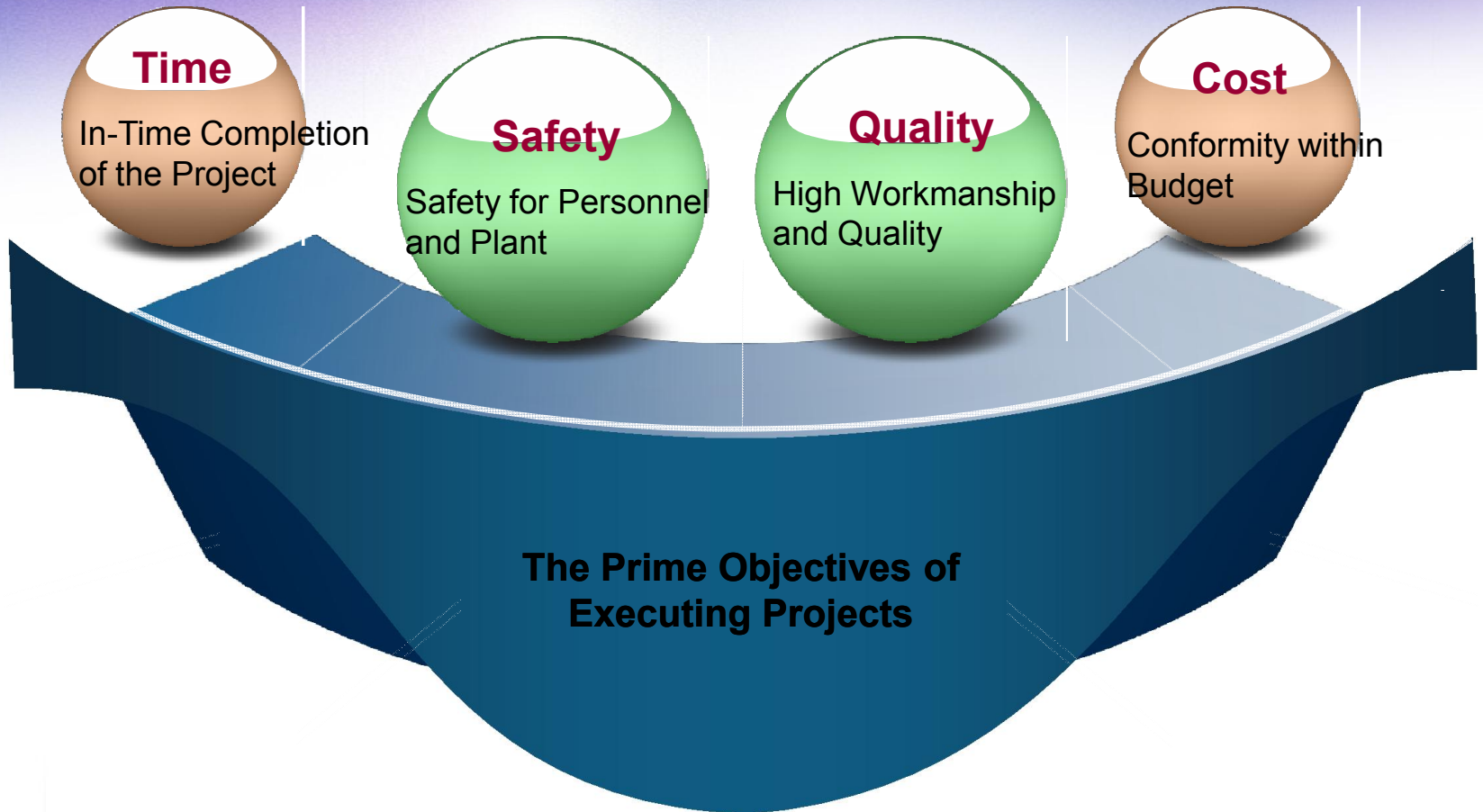
### **Specialist & Technical Man-Power Supply**

- Specialist & Engineers for all Engineering Disciplines
- Technical Specialist
- Construction Supervisors
- S3D/PDS/PDMS Operators

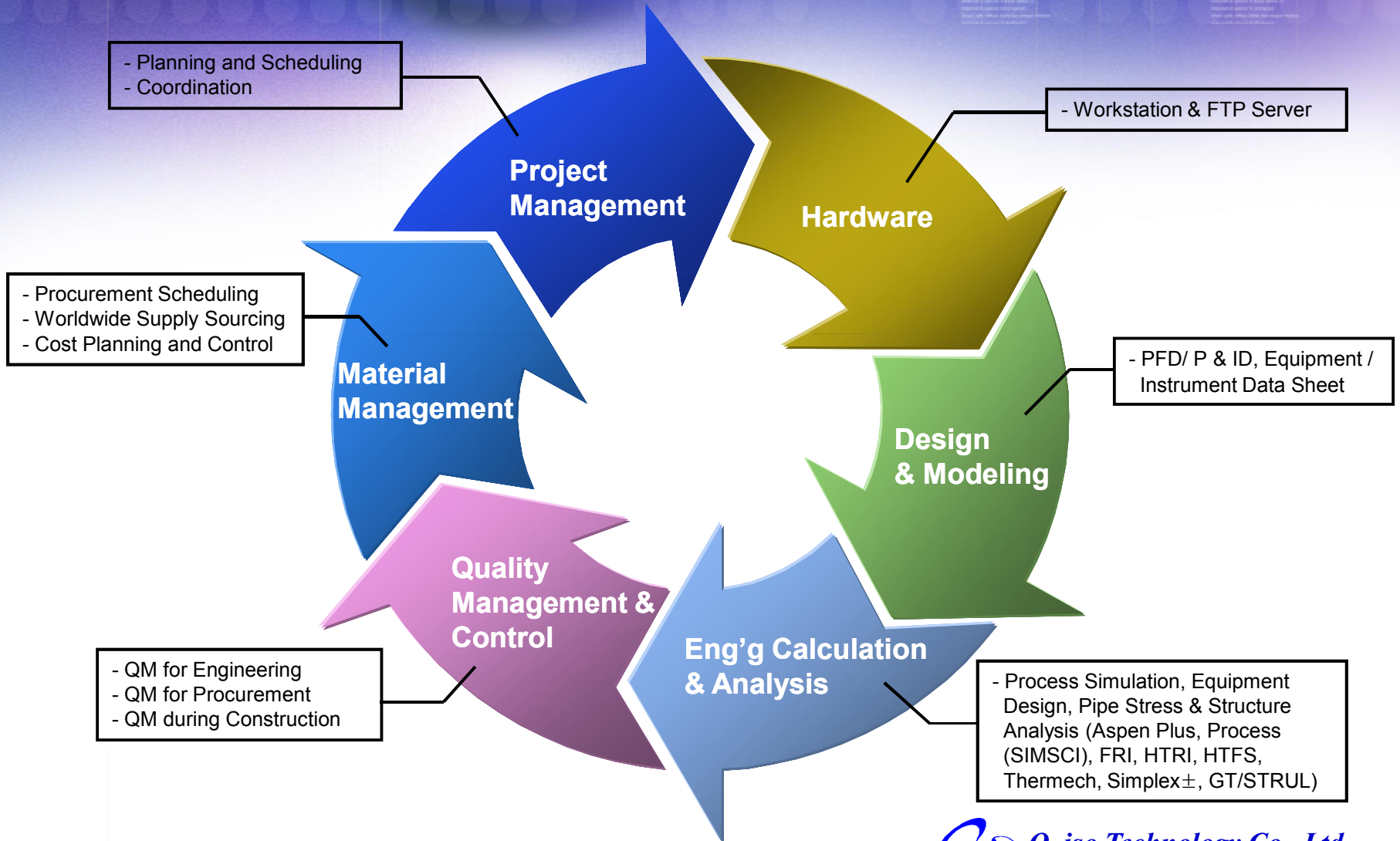


# 3. Engineering Execution

## 1) The Prime Objectives



## 2) Integrated Computer Aided Engineering System (ICAE)



# 4. Quality Management

## Basic Policy

- ✓ Compliance with Contractual Requirements Project Specification Code & Standard
- ✓ Compliance with Requirement of ISO9001

## Reporting

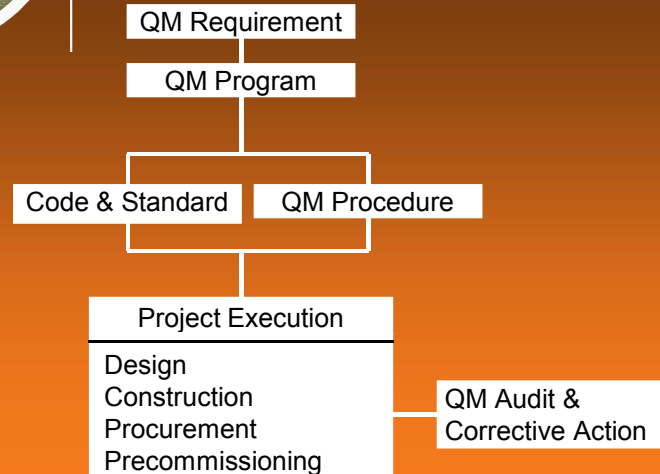
- ✓ To the Director of Project Division
- ✓ To the General Manager of QM Department to keep Independency from pressure of Project Execution

## Quality Management System

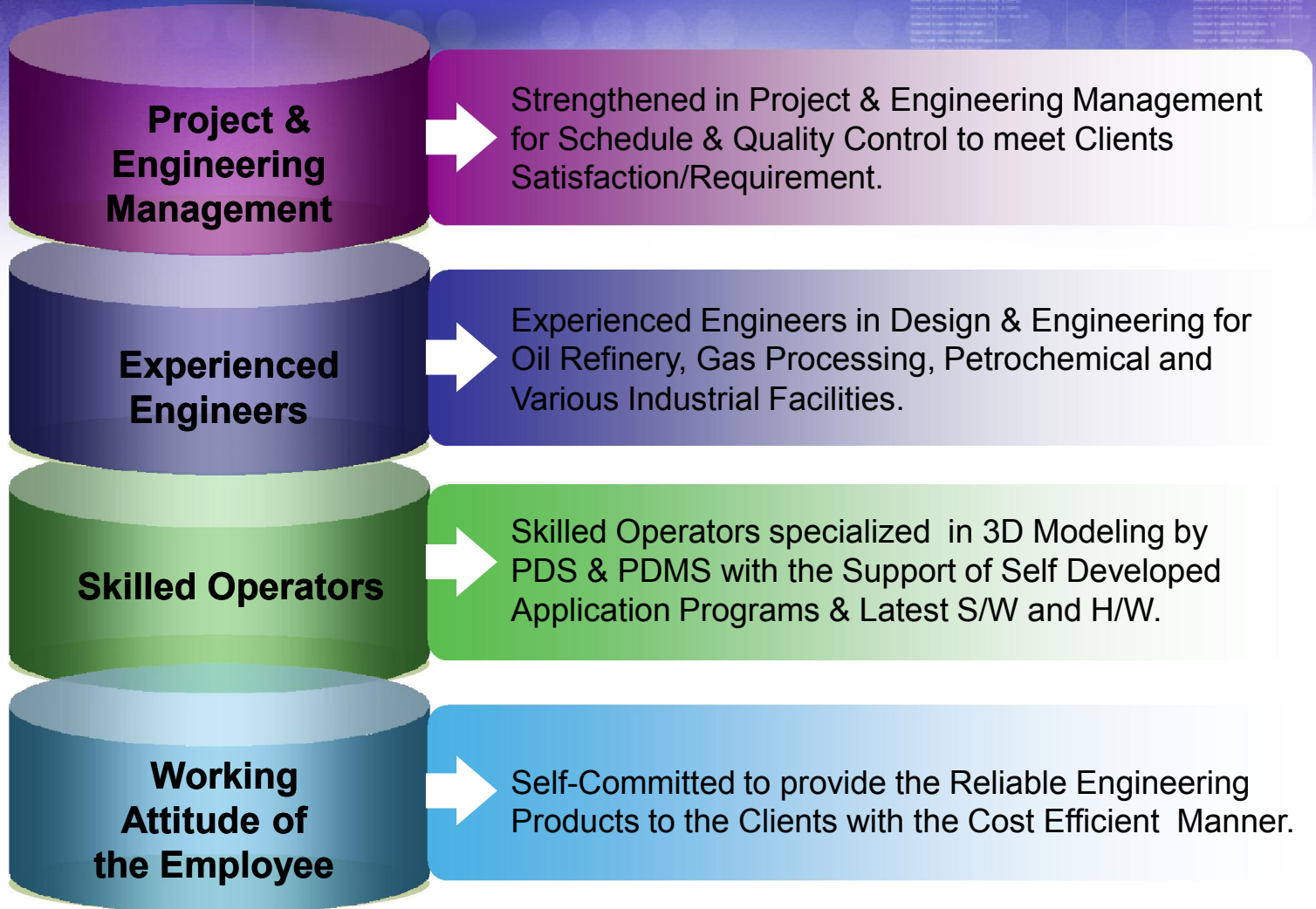
## Procurement Execution Plan

- ✓ Responsibility : the Director of Project Division
- ✓ Execution : Project QM Manager at Home Field QC Manager at Field

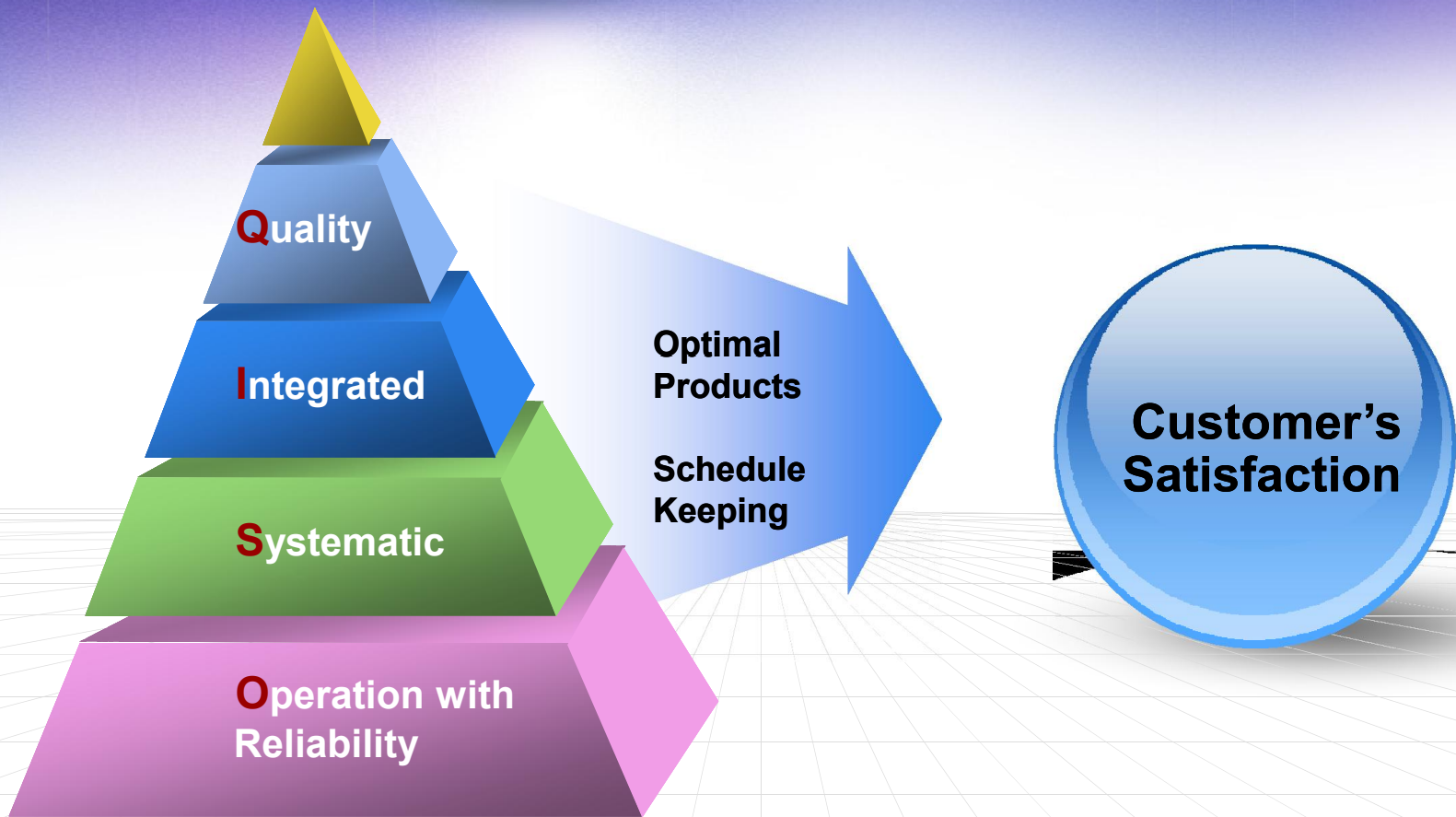
## QM Implementation



# 5. Q\_iso's Core Assets



# 6. Management Objectives



# 7. Customers

Q\_iso Technology is Working Together for Long Term Value with Global Players and Leading International Engineering Organization in Oil & Gas, Refinery, Petrochemical, Power and Bio Industries.



JGC CORPORATION



SAMSUNG BIOLOGICS

Samsung Biologics Co., Ltd.



Daelim Industrial Co., Ltd.



Hyundai Engineering Co., Ltd.



Hyundai Engineering & Construction Co., Ltd.



Intergraph Korea Ltd.



Celltrion Inc.



Aveva Korea Ltd.



Toshiba CORPORATION



SAMSUNG ENGINEERING

Samsung Engineering Co., Ltd.



SK Engineering & Construction Co., Ltd.



GS Engineering & Construction Co., Ltd.



KEPCO E&C Company, Inc.



Hyosung Corporation



Jereh Oil & Gas Engineering Corp.



## 8. Experiences (Latest Major Experiences Only)

No.	Owner/Customer	Project Name	Location	Period	Remark
1	Samsung Biologics	EDISON IV Project	Korea	20. 06 - Present	E, S3D
2	Samsung Eng'g.	HMD Refinery Project	Algeria	20. 02 - Present	E, S3D
3	Samsung Eng'g.	DBNR_Dos Bocas Phase I Project	Mexico	19. 09 - Present	E, S3D
4	Hyundai Eng'g.	Marjan Increment Program PKG #12 Project	Saudi Arabia	19. 07 - Present	E, S3D
5	Samsung Eng'g.	ADNOC Hail & Ghasha Project Proposal	UAE	19. 08 - 19.12	E, S3D
6	Hyundai Eng'g.	HDO Revamping Project (RDS, SRU Unit)	Korea	19. 04 - 20. 08	E, PDS
7	Samsung Eng'g.	Carbon Black & Delayed Coker Project	UAE	19. 01 - 20. 02	S3D
8	Samsung Eng'g.	Thai Oil Clean Fuel Project	Thailand	18. 12 - Present	E, S3D

(E: Engineering, PS: Procurement Service, CS: Construction Supervision, 3D(PDS/PDMS/S3D: 3D Modeling)

## 8. Experiences (Latest Major Experiences Only)

No.	Owner/Customer	Project Name	Location	Period	Remark
9	Samsung Eng'g.	ADNOC Refining CFP Project	UAE	18. 12 - 20. 03	S3D
10	Samsung Eng'g.	ADNOC Refining WHRP Project	UAE	18. 12 - 20. 07	S3D
11	Sundo Eng'g	BIO CDMO#1 Project	Korea	18. 09 - 20. 02	E, PDS
12	Samsung Eng'g.	BAPCO(BMP) Refinery Project	Bahrain	18. 08 - 20.09	S3D
13	GS E&C Co., Ltd.	Kais CCPP Project	Algeria	18. 05 - 20. 07	E, PDS
14	JGC Corp.	APX LNG Project	Mozambique	18. 07 - 19. 03	E, PDMS
15	Yongho M&E Co., Ltd.	Hanwha Chemical VCM 1 Revamping Project	Korea	18. 06 - 18. 11	E, PDS
16	Lotte E&C Co., Ltd.	Lotte Chemical MEX3 Project	Korea	18. 05 - 19. 09	E, PDMS

(E: Engineering, PS: Procurement Service, CS: Construction Supervision, 3D(PDS/PDMS/S3D: 3D Modeling)

## 8. Experiences (Latest Major Experiences Only)

No.	Owner/Customer	Project Name	Location	Period	Remark
17	GS E&C Co., Ltd.	Dangjin Biomass #2 Power Plant (105 MW x 1 Unit)	Korea	18. 04 - 20. 05	E, PDS
18	JGC Corp.	CRISP Project	Singapore	18. 02 - 18. 09	E, PDS
19	ISU SYSTEM Co. Ltd.	ISU Chemical Plant Portal Establishment Project	Korea	17. 12 - 18. 10	S3D
20	Hyundai Eng'g.	Hyundai Oilbank SDA Project (Solvent De-Asphalting)	Korea	17. 03 - 18. 04	E, PDS
21	Hyundai Eng'g.	EDRF Project (Ethane Deep Recovering)	Saudi Arabia	17. 02 - 18. 05	E, S3D
22	Doosan Heavy Ind.	Grati Add-on Project (150 MW, 3 x 3 x 1, 1 Block)	Indonesia	17. 02 - 18. 03	E, S3D
23	Sundo Eng'g	Cooling Towers & Other Facility	Korea	17. 01 - 17. 10	E, PDS
24	Intergraph Corp.	CBDC Project (Model Conversion)	UAE	16. 07 - 18. 01	S3D

(E: Engineering, PS: Procurement Service, CS: Construction Supervision, 3D(PDS/PDMS/S3D: 3D Modeling)

## 8. Experiences (Latest Major Experiences Only)

No.	Owner/Customer	Project Name	Location	Period	Remark
25	Samsung Eng'g.	EDISON III Project	Korea	16. 03 - 18. 05	E, PDS
26	Hyosung Dong Nai	VP-1 Project	Vietnam	15. 10 - 16. 05	E, PS, CS, PDS
27	Hyundai Eng'g.	Lotte Versalis Synthetic Rubber Project	Korea	15. 07 - 16. 09	E, PDS
28	GS E&C Co., Ltd.	Pocheon Community Energy Service Project (169.9 MW x 1 Unit)	Korea	15. 05 - 18. 03	E, PDS
29	Hyundai Eng'g.	HDC MX EPC Project	Korea	15. 01 - 16. 02	E, PDS
30	Intergraph Corp.	GS & SK S3D Modeling for KNPC Project(Reverse Design)	Kuwait	14. 12 - 15. 03	E, S3D
31	JGC Corp.	KNPC's CF Project	Kuwait	14. 06 - 17. 03	E, S3D
32	Daelim Ind. Co., Ltd.	Sohar Refinery Improvement Project	Oman	14. 03 - 15. 08	E, S3D

(E: Engineering, PS: Procurement Service, CS: Construction Supervision, 3D(PDS/PDMS/S3D: 3D Modeling)

## 8. Experiences (Latest Major Experiences Only)

No.	Owner/Customer	Project Name	Location	Period	Remark
33	Hyundai Eng'g.	Asahimas VCM Project	Indonesia	14. 01 - 16. 02	E, S3D
34	Hyundai Heavy Ind.	MOHO NORD FPU Project	Congo	13. 11 - 14. 09	E, PDMS
35	Samsung Eng'g.	EDISON II Project	Korea	13. 11 - 15. 01	E, PDS
36	JGC Corp.	Mozambique LNG Project	Mozambique	13. 08 - 13. 12	E, PDS
37	JGC Corp.	NSRP Project	Vietnam	13. 08 - 15. 11	E, PDS
38	Samsung Eng'g	Carbon Black & Delayed Coker Project	UAE	13. 05 - 14. 06	E, PDS
39	Hyundai Eng'g.	Termotasajero II 160 MW CFPP Project	Colombia	13. 01 - 15. 09	E, PDS
40	Hyundai Eng'g.	HDO Lube Base Oil Project	Korea	12. 11 - 13. 12	E, PDS

(E: Engineering, PS: Procurement Service, CS: Construction Supervision, 3D(PDS/PDMS/S3D: 3D Modeling)

## 8. Experiences (Latest Major Experiences Only)

No.	Owner/Customer	Project Name	Location	Period	Remark
41	eTEC E&C	Batalla De Santa Ines Refinery Project	Venezuela	12. 09 - 13. 03	E, PDS
42	Hyundai Eng'g.	Mong Duong-1 Coal Fired Power Plant (500 MW x 2 Units)	Vietnam	12. 03 - 13. 12	E, PDS
43	Kangwon B&E	Ma'aden Aluminum Project (Boiler Unit)	Saudi Arabia	12. 02 - 12. 11	E, PDS
44	KC Cottrell Co., Ltd.	Ma'aden Aluminum Project (FGD Unit)	Saudi Arabia	12. 02 - 12. 11	E, PDS
45	JGC Corp.	RPLC Project	Venezuela	12. 02 - 14. 03	E, S3D
46	KEPCO E&C Co., Inc.	Taeon IGCC Power Plant Project (300 MW x 1 Unit)	Korea	12. 01 - 14. 12	E, PDS
47	KEPCO E&C Co., Inc.	T2 Takoradi Thermal Power Plant Expansion Project(Add On :110 MW)	Ghana	12. 01 - 13. 12	E, PDS
48	Daelim Ind. Co., Ltd.	RMP-2 Project - SRU Unit	Philippines	11. 08 - 12. 06	E, PDS

(E: Engineering, PS: Procurement Service, CS: Construction Supervision, 3D(PDS/PDMS/S3D: 3D Modeling)

## 8. Experiences (Latest Major Experiences Only)

No.	Owner/Customer	Project Name	Location	Period	Remark
49	Samsung C&T Corp.	EDISON PKG #1 Project	Korea	11. 08 - 12. 09	E, PDS
50	Samsung Eng'g	EDISON PKG #2 Project	Korea	11. 07 - 12. 09	E, PDS
51	Samsung Eng'g.	Shaybah PKG #3 Project (336 MW(NGL), 126 MW(Gosp))	Saudi Arabia	11. 06 - 12. 06	E, PDS
52	Hyundai Eng'g.	PMMA Project	Korea	11. 04 - 12. 02	E, PDS
53	JGC Corp.	Barzan Gas Project	Qatar	11. 03 - 13. 06	E, PDS
54	KEPCO E&C Co., Inc.	Zwitina 750 MW CCPP Project	Libya	11. 02 - 13. 01	E, PDS
55	Doosan Heavy Ind.	Rabigh Power Plant No.2 Project (700 MW x 4 Units)	Saudi Arabia	10. 12 - 12. 01	E, PDS
56	Hansol EME Co., Ltd.	Ayla WRA Project	Qatar	10. 10 - 11. 03	E, PDMS

(E: Engineering, PS: Procurement Service, CS: Construction Supervision, 3D(PDS/PDMS/S3D: 3D Modeling)

## 8. Experiences (Latest Major Experiences Only)

No.	Owner/Customer	Project Name	Location	Period	Remark
57	Hyundai Eng'g.	Ruwais Lube Base Oil Project	UAE	10. 09 - 12. 08	E, PDS
58	Hyundai Eng'g.	KOC Pipeline Project	Kuwait	10. 09 - 12. 02	E, PDS
59	KCC E & C	KCC Resin & Paint Plant Project	Korea	10. 05 - 11. 08	E, PDS
60	Hyundai Heavy Ind.	Riyadh PP11 IPP Project (1,900 MW, 3 x 3 x 1, 2 Blocks)	Saudi Arabia	10. 04 - 11. 12	E, PDS
61	Hyundai Heavy Ind.	Sabiya CCGT Project (1,980 MW, 2 x 2 x 1, 3 Blocks)	Kuwait	09. 10 - 10. 12	E, PDS
62	Hyundai Eng'g.	Habshan-5 Utility & Offsite	UAE	09. 09 - 11. 05	E, S3D
63	SK E & C	GC 24 Project	Kuwait	09. 09 - 10. 03	E, PDS
64	Hyundai Heavy Ind.	Pearl GTL Steam Tracing	Qatar	09. 06 - 09. 12	E, PDS

(E: Engineering, PS: Procurement Service, CS: Construction Supervision, 3D(PDS/PDMS/S3D: 3D Modeling)



## 8. Experiences (Latest Major Experiences Only)

No.	Owner/Customer	Project Name	Location	Period	Remark
65	Hyundai Eng'g.	SK HCC Project - VDU Unit	Korea	09. 03 - 09. 08	E, PDS
66	Daelim Ind. Co., Ltd.	No.2 HOU Project - SRU Unit	Korea	09. 02 - 10. 05	E, PDS
67	Hyundai Heavy Ind.	USAN FPSO Project	Nigeria	08. 12 - 09. 07	E, PDMS
68	JGC Corp.	Shell gFLNG FEED	Japan	08. 08 - 08. 11	E, PDS
69	Hyundai Eng'g.	Tripoli West Thermal Power Plant (350 MW x 4 Units)	Libya	08. 06 - 14. 06	E, PDS
70	Hyundai Heavy Ind.	P1 Project	Korea	08. 06 - 09. 06	E, PDS
71	Hyundai Eng'g.	Al-Khalij Thermal Power Plant (350 MW x 4 Units)	Libya	08. 06 - 10. 12	E, PDS
72	Hyosung Corp.	GP Project	China	08. 04 - 08. 11	E, PS, CS, PDS

(E: Engineering, PS: Procurement Service, CS: Construction Supervision, 3D(PDS/PDMS/S3D: 3D Modeling)

## 8. Experiences (Latest Major Experiences Only)

No.	Owner/Customer	Project Name	Location	Period	Remark
73	Hyundai Eng'g.	Alaoji Add-on CCPP (290 MW x 2 Units)	Nigeria	08. 04 - 09. 12	E, PDS
74	JGC Corp.	RPLC Project	Venezuela	07. 12 - 08. 12	E, PDS
75	JGC Corp.	NCP Ethylene Plant	Saudi Arabia	07. 12 - 10. 01	E, PDS
76	Toshiba Corp.	Tanjung Jati Coal Fired Power Plant (700 MW x 2 Units)	Indonesia	07. 11 - 08. 05	E, PDS
77	Samsung Eng'g.	Borouge 2 Olefin Conversion Unit	UAE	07. 08 - 08. 10	E, PDS
78	Hyundai Eng'g.	SCPP Project (338 MW x 3 Plants)	Nigeria	07. 07 - 09. 12	E, PDS
79	Daelim Ind. Co., Ltd.	Saudi Kayan PC Project	Saudi Arabia	07. 05 - 08. 10	E, PDS
80	JGC Corp.	South Pars Gas Processing	Iran	07. 04 - 07. 12	E, PDS

(E: Engineering, PS: Procurement Service, CS: Construction Supervision, 3D(PDS/PDMS/S3D: 3D Modeling)

## 8. Experiences (Latest Major Experiences Only)

No.	Owner/Customer	Project Name	Location	Period	Remark
81	Celltrion Inc.	Biologic Manufacturing Facility	Korea	06. 11 - 08. 11	E, PDS
82	SK E & C	KPPC Aromatic Plant	Kuwait	06. 03 - 07. 08	E, PDS
83	Toshiba Corp.	PD2 CCPP (700 MW, 2 x 2 x 1)	Malaysia	06. 02 - 07. 12	E, PDS
84	JGC Corp.	Rabigh FCC & Ethane Cracker	Saudi Arabia	05. 07 - 07. 06	E, PDS
85	Hyundai Eng'g.	EGP3 Gas Processing	Nigeria	05. 04 - 07. 09	E, PDS
86	JGC Corp.	Dolphin Gas Processing	Qatar	05. 03 - 06. 02	E, PDS
87	JGC Corp.	TPC-2 Polycarbonate Plant	China	05. 03 - 05. 11	E, PDS
88	JGC Corp.	Methyl Amine Project	China	05. 03 - 05. 10	E, PDS

(E: Engineering, PS: Procurement Service, CS: Construction Supervision, 3D(PDS/PDMS/S3D: 3D Modeling)

## 8. Experiences (Latest Major Experiences Only)

No.	Owner/Customer	Project Name	Location	Period	Remark
89	CTCI Corp.	Aromatic No.3 (Heater)	Taiwan	05. 01 - 05. 11	E, PDS
90	CTCI Corp.	EP2 Ethylene Expansion	Qatar	04. 12 - 05. 08	E, PDS
91	JGC Corp.	CMA Project	China	04. 10 - 05. 11	E, PDMS
92	CTCI Corp.	PRU #2 Unit	Taiwan	04. 12 - 05. 06	E, PDMS
93	CTCI Corp.	Aromatic No.3	Taiwan	04. 09 - 05. 12	E, PDS
94	JGC Corp.	Qatar LNG Plant	Qatar	04. 06 - 04. 08	E, PDS
95	Hyundai Eng'g.	Hannong Chemical Plant	Korea	04. 06 - 04. 10	E, PDS
96	Hyundai Eng'g.	Oil Bank Hydrogen Plant	Korea	04. 03 - 05. 01	E, PDS

(E: Engineering, PS: Procurement Service, CS: Construction Supervision, 3D(PDS/PDMS/S3D: 3D Modeling)

## 8. Experiences (Latest Major Experiences Only)

No.	Owner/Customer	Project Name	Location	Period	Remark
97	JGC Corp.	TPC-1 Polycarbonate Plant	China	03. 06 - 04. 06	E, PDS
98	JGC Corp.	Sohar Oil Refinery	Oman	03. 05 - 05. 02	E, PDS
99	Saipem	Piping Stress Analysis	Libya	03. 01 - 04. 02	E
100	Daewoo Shipbuilding	B.P Thunder Horse Plant	Korea	02. 11 - 03. 07	E, PDS
101	Hyundai Eng'g.	Caprolactam H2 Plant	Korea	02. 08 - 03. 05	E, PDS
102	Hyundai Heavy Ind.	Sabratha Platform Project	Libya	02. 07 - 04. 02	E, PDMS
103	JGC Corp.	Tangguh LNG Plant	Indonesia	02. 06 - 03. 06	E, PDS
104	Hanwha E & C	BASF MDI Plant	Korea	02. 02 - 03. 07	E, PDS

(E: Engineering, PS: Procurement Service, CS: Construction Supervision, 3D(PDS/PDMS/S3D: 3D Modeling)

## 8. Experiences (Latest Major Experiences Only)

No.	Owner/Customer	Project Name	Location	Period	Remark
105	Doosan Heavy Ind.	Altamira CC PP	Mexico	01. 12 - 02. 06	E, PDS
106	JGC Corp.	CSPC Ethylene Plant	China	01. 12 - 02. 04	E, 3D

(E: Engineering, PS: Procurement Service, CS: Construction Supervision, 3D(PDS/PDMS/S3D: 3D Modeling)

***Thank you!***

